

Specially developed for dry-wall construction and interior work

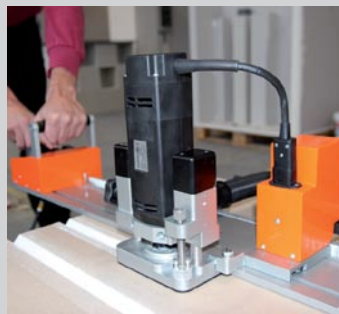
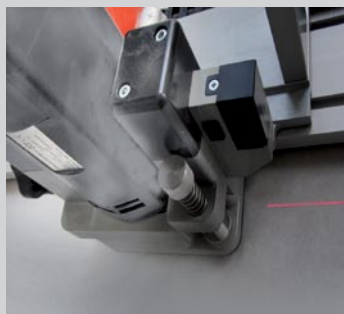
## Pre-fabrication at the job site

# Supercut XPM



- Easy operation
- Easy to transport
- No filling required
- Milling and sawing with just one machine
- Almost 100% dust extraction
- Exact positioning via laser projection
- Perfect milling results at the job site
- Specially developed for dry-wall construction and interior work

**MOBILE  
QUICK  
PRECISE**



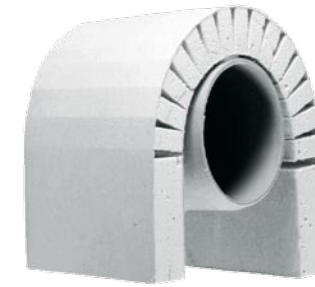
The Supercut series from flextos has been specially developed for façade construction and interior work. Its application range is diverse and it is ideally suited for fast, clean and cost-saving processing of various materials, in particular in dry-wall construction projects. Thanks to the prefabrication of the parts, time savings of up to 75% can be achieved!

**Work Smart.....**

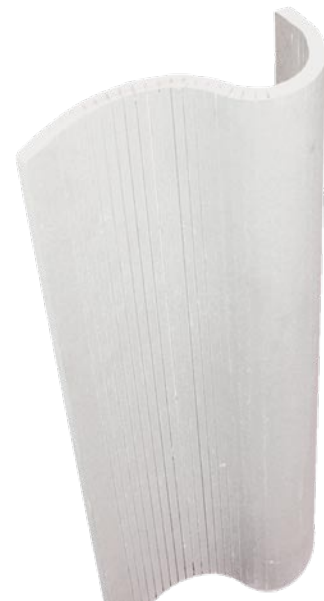
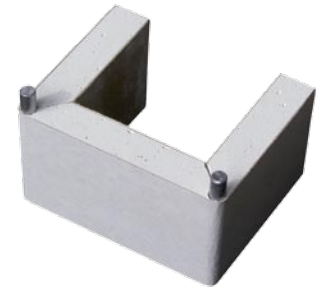
Production of precise parts  
on site whenever and  
wherever you need them



No  
corner protection edges  
or filling effort,  
no complicated  
sub-constructions



Canopy,  
indirect lighting,  
inspection flaps,  
cove lights



Creation of curves,  
arches, segmental arches,  
rounded walls  
and niches



Pipe cladding,  
square or round,  
simple fold  
without filling



Production of niches,  
installation boxes,  
shelves and boards,  
window reveals and  
wall connections



Creation  
of round pillars,  
square pillars,  
bases and capitals,  
wall attachments,  
flutings



The mobile, self-driving  
milling machine for simple  
one-man operation on site



Fast returns and profits thanks to an unbeatable price-performance ratio

# XPM pays off quickly...a worthwhile investment!

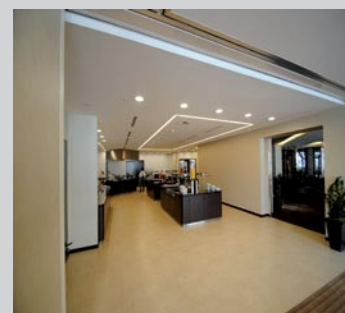


## Further Advantages

- Precise and fast working
- Ready for use immediately and everywhere
- Easy and fast one-man operation
- Simple customised produced parts
- Clean and dust-free working
- Excellent price-performance ratio

## Technical Data

Cutting length:	up to 3300 mm with an extension rail
Feed:	max. 8 m/min, that can be controlled
Cutting depth saw:	up to 33 mm (optional)
Connected load:	230V, 50-60 HZ
Output:	max. 1,3 kW
Replacement aggregate:	Mill or Saw (optional)



The Supercut XPM from flextos is the first mobile. Self-driving milling machine on the building site, making child's play of corners and edges. There is no more need to set corner protection rails because you can create your own moulds easily without dust directly at the building site straight from the pallet.